

Contents

Welcome to Trivia IQ Challenge

[Introduction](#)

[Main Menu](#)

[Playing](#)

[More quizzes?](#)

SUPPORT

[Our proud tradition of support](#)

[Voice](#)

[Web site](#)

[E-Mail](#)

[Fax](#)

[Internet](#)

Acknowledgments

[Special notice](#)

[Special Thanks](#)

Introduction

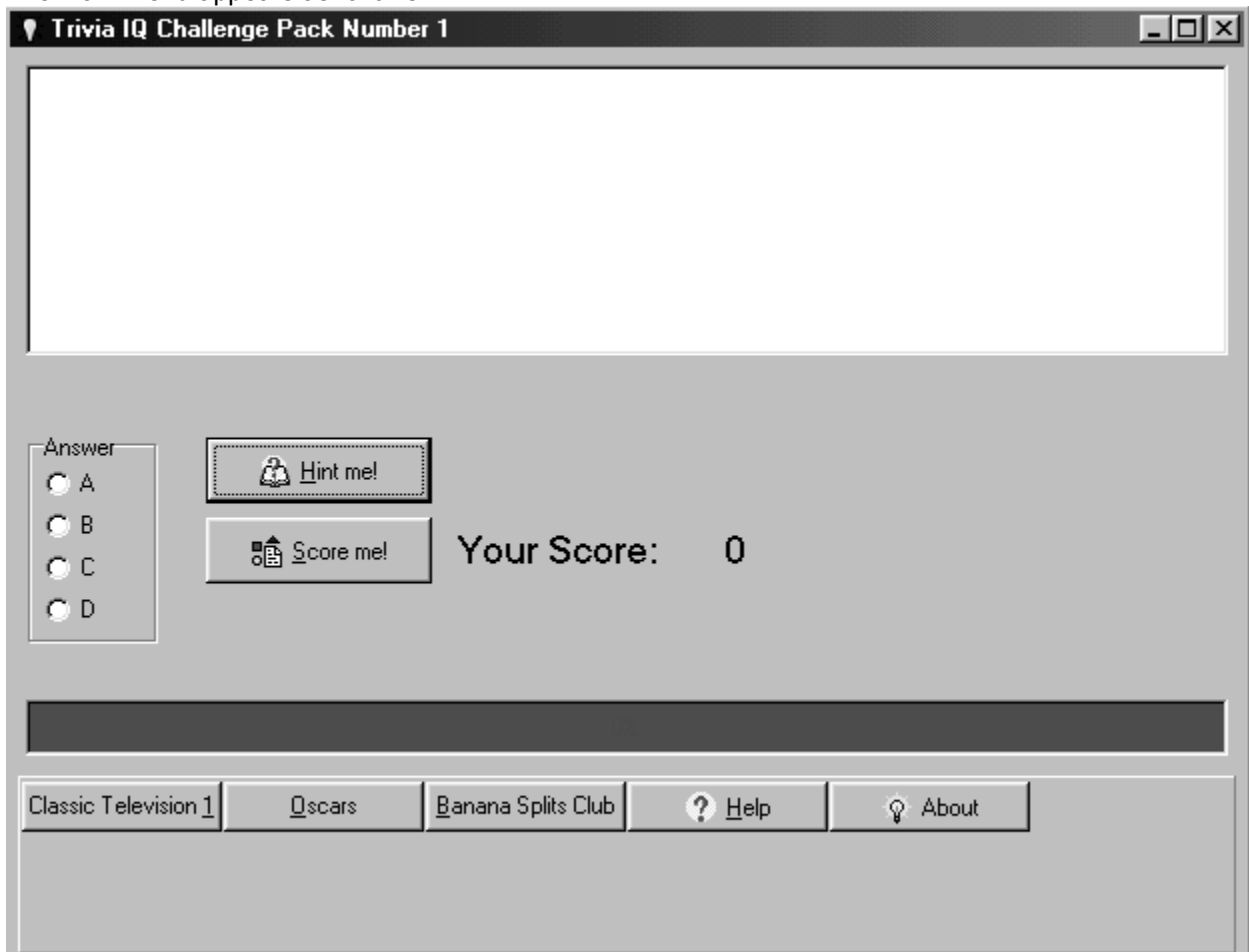
Trivia IQ Challenge presents quick, ten question trivia quizzes on a bewildering number of topics.

IMPORTANT NOTE: This series is present in various standalone Trivia Packs.

Each pack contains different questions. Screen Shots in your program may appear slightly different. However, the quizzes operate the same way.

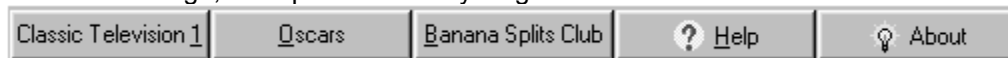
Main Menu

The main menu appears as follows:



Main menu

To select from the different quizzes, click on the topics. Our topics vary from Professional Wrestling to Mensa Challenge, so expect to see anything!



Pick your topic by clicking on the quiz name that you want to take

More:

[Help](#)

[About](#)

Help

Clicking on the Help Button shows this file.

About

Clicking on the About Button shows program copyright and version information.

Playing

After clicking on a quiz, you'll see the first of your ten questions.

We have picked a quiz that may not be in your pack, but the quizzes work alike:

<p>Which Iron Chef is known for being squeamish about handling live seafood?</p> <ul style="list-style-type: none">A. SakahiB. MorimotoC. KongD. Nakamura
--

Question

More:

[Hint](#)

[Marking your answer or guess](#)

[Scoring](#)

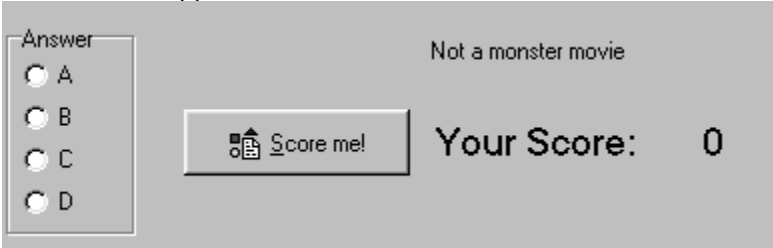
[Next question](#)

Hint

If you don't know the answer, you might decide to go for a hint by pressing the hint button- remember that asking for a hint costs you 5 points per question!



The hint then appears:



Your hint is "Not a monster movie." Hints can give away the answer, or, more likely, eliminate an answer. The possible answers were:

Sakai, Morimoto, Kong and Nakamura

Well, King Kong is a monster movie, so the hint eliminates Kong as an answer. The hints can be very devilish. There are at least two questions in which the quizmasters refused to give hints! Ouch. But it's part of the fun.

Marking your answer or guess

Mark your answer or guess by clicking in the Answer Radio Group:

Answer

A

B

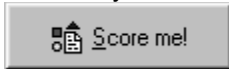
C

D

You can change your answer until you decide to score your answer.

Scoring

To score your answer, click on Score Me:



If you're right, you get a pat on the back, for instance:

Allez Cuisine!

Answer

A

B

C

D

but, if you're wrong, the Trivia IQ Challenge will tease you-- sometimes cruelly! It's a game, just relax!

17-12

Answer

A

B

C

D

(If you care, Allez Cuisine is the starting cry for the Iron Chef program.... 17-12 is the lowest score ever given in the show's judging. If you aren't an expert on the area of trivia it might not make any sense to you....., But, usually, it will.)

Next question

That's it! To go to the next question, click on the forward button. The forward button doesn't appear until you have picked an answer:



Enjoy

More quizzes?

As the registered owner of a Cosmi product, you may find more quizzes on our web site from time to time, they're freebies from Team Cosmi to you.

Our proud tradition of support

We encourage all of our users to provide comments and suggestions about this program. This program is supported by voice, fax and Internet e-mail.

Voice

For telephone support, call COSMI's Customer Service at (310) 886-3510 during the hours below.
(Note: All times are in the Pacific Standard Time zone.)

Monday through Thursday, 8:30 a.m. - 12:00 noon and 1:00 p.m. - 4:00 p.m.

Friday, 8:30 a.m. – 12:00 noon.

Ö COSMI is very proud to be one of the few remaining software publishers to provide no charge customer support!

Web site

Visit our web site: www.cosmi.com

E-Mail

Support questions may be addressed to: support@cosmi.com.

Fax

You may fax us at (310) 886-3517.

Internet

Be sure to visit COSMI's Internet Web site: <http://www.cosmi.com>.

Special notice

These trivia questions are "unauthorized." Cosmi is not approved, endorsed or affiliated by the owners or rights holders of the events in the quizzes.

Special Thanks

Team COSMI, the only fully integrated software developer and publisher in the budget software industry, wishes to give special thanks to Team COSMI members who made special contributions to this program:

Programming: Amy Seeberger

Packaging: Susan Randle and David Serrano

Testing/In house Programming: Carol Dunn, Emerald Burke, Brian Snofsky, Cesar Garcia and Georgia Schubert

The Trivia engine was licensed to Cosmi by Amy Seeberger. Thanks Amy!

